

Top View Series / 1616 19.2W 24V/ Tunable white

Product No. : FEN19C-P7-G1 28HZ92228HZ950 24V240S12 1616L05

Technical Details

Product No. FEN19C-P7-G1 28HZ92228HZ950 24V240S12 1616L05

Power	19.2W/M 5.85W/ft
Voltage	DC24V
CRI	90
Led Qty	240LEDs/M
Length/Reel	5M
Working Temperature	-25-60°C
Storage Temperature	-30-80°C
Voltage Range	23 -25V dc
Reverse Voltage	25V dc

- Seamless and uniform light output, dot free.
- Bendable at vertical direction. IP67 protection.
- Robust housing with high quality silicon, UV proof for true outdoor application.
- The matched color control system can achieve uniform-color temperature and brightness adjustment

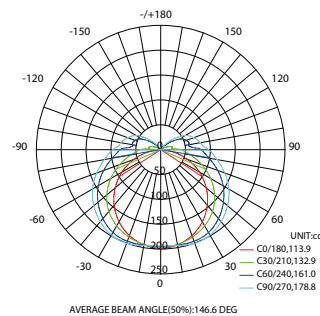


Lumens

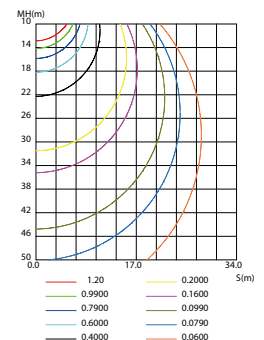
Color Temperature		
● 2200K	450lm/m	137lm/ft
● 5000K	540lm/m	165lm/ft

Light Distribution

LUMINOUS INTENSITY DISTRIBUTION DIAGRAM

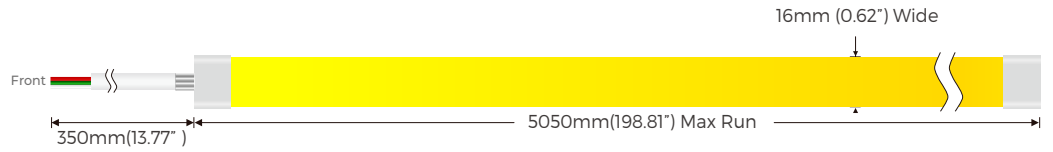
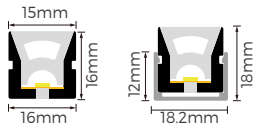


CO PLANE ISOLUX DIAGRAM (UNIT:lx)



ECOMAX LIGHTING

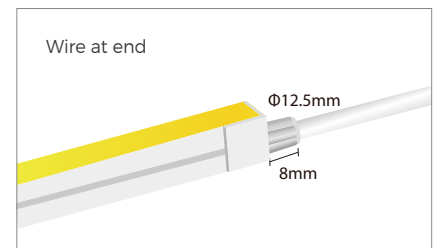
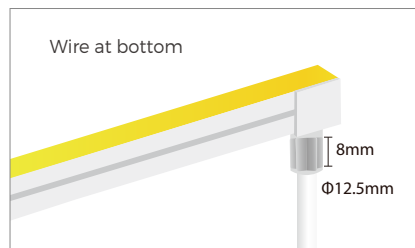
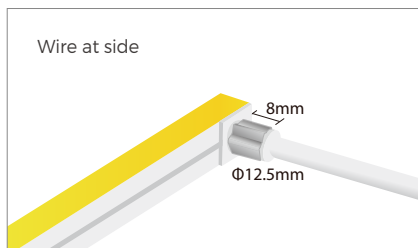
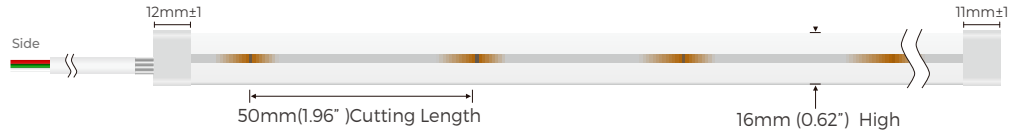
Dimension



Tunable white



* Optional waterproof head. this picture is for reference only.

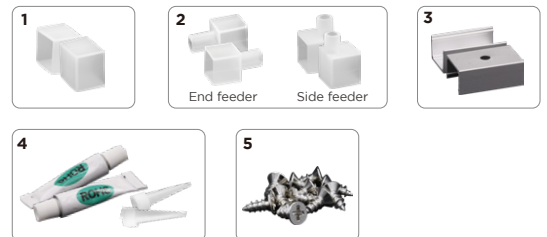


End cap


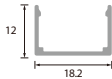

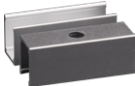
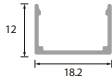

Products	Wire at end	Wire at side	Wire at bottom
Ordinary End Cap			
Injection-moulded endcap *Cable can be bended to any direction.			

Accessories Specification

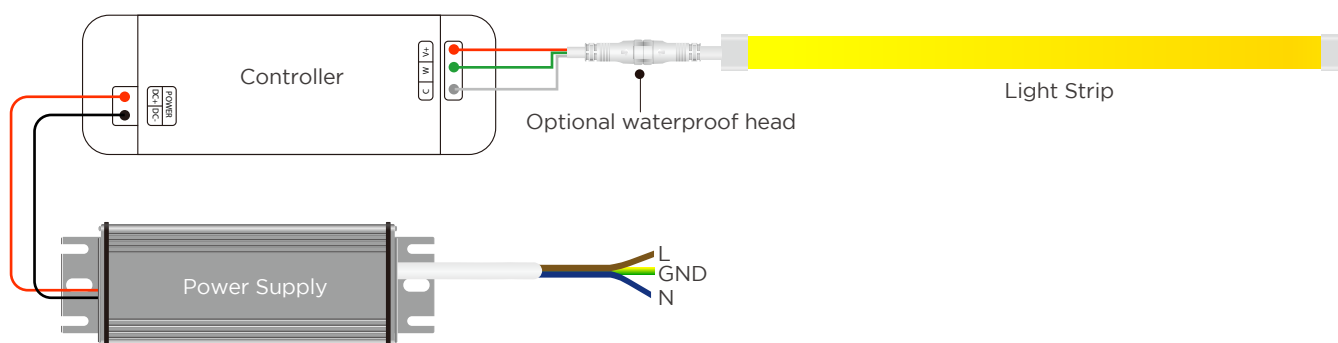
Name	Quantity	Note
1. End cap	4pc	
2. Front outlet end cap	2pc	*Optional
3. Clips	10pc	
4. Glue & Glue nozzle	2pc	
5. Screw	10pc	



Aluminum Profile List

		Section diagram	install
	18.2×12mm		
	18.2×12mm		

Power Connection Diagram



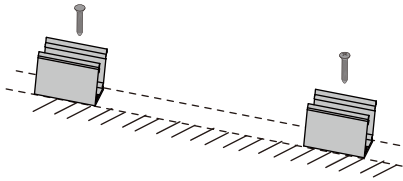
Recommended Power Supplies

Item Number	Description	Input Voltage	Output Voltage	Dimmable	Dimensions
DVH75-24-P7-G1LS AL	Waterproof Driver 75W	220-240	DC24V 3.12A	NO	165×60×36.5mm
DVH100-24-P7-G1 LS AL	Waterproof Driver 100W	220-240	DC24V 4.16A	NO	167×60×34.6mm
DVH150-24-P7-G1 LS AL	Waterproof Driver 150W	220-240	DC24V 6.25A	NO	167×60×34.6mm
DVH200-24-P7-G1LS AL	Waterproof Driver 200W	220-240	DC24V 8.33A	NO	216×65×39.5mm
DVH300-24-P7-G1 LS AL	Waterproof Driver 300W	220-240	DC24V 12.5A	NO	265×65×39.5mm

Installation

① Clip

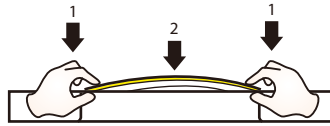
Fix the clips and aluminum profile via the screws.



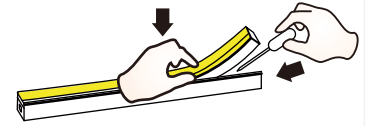
⚠ Suggestion: 2pcs clips per meter.

② Neon Series

Simultaneously install the neon from both ends.

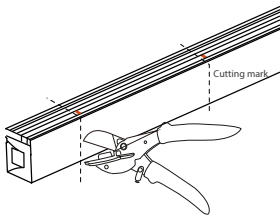


Should use tools to assist when remove the neon.



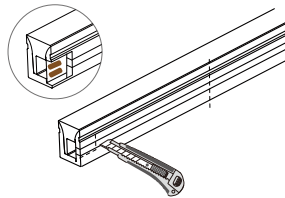
Cutting

① Cut the neon to be required length



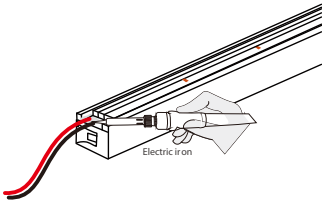
⚠ The minimum cutting unit is based on the cutting mark.

② Cut the side of neon, expose the soldering pad

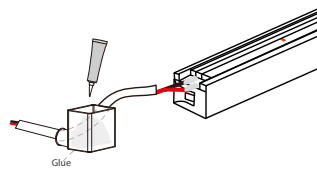


Soldering

① Solder the cable onto the PCB



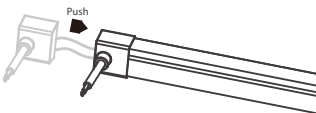
② Put the wire into and inject glue into the end cap



⚠ The amount of glue is about 1/3-1/2 of end cap.

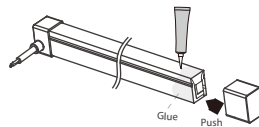
Intall end cap

① Push the end cap to wrap end of neon

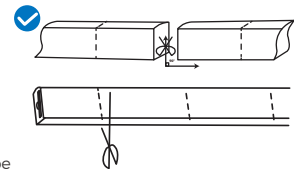


⚠ After the glue is injected, the neon needs to be laid flat for 2 hours to before other process.

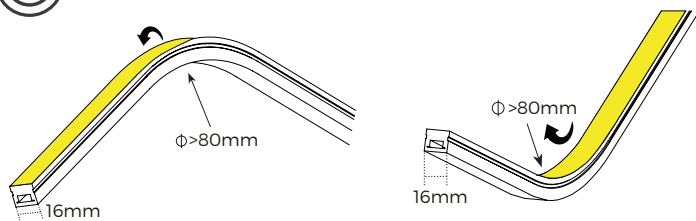
② Apply gel around the tail of neon and install the end cap



⚠ After the glue is injected, the neon needs to be laid flat for 2 hours to before project process. Glue will complete dry after 24hours.



Top bending series correct bending way.



PACKING

N.W /CTN(KG)	QTY / CTN(reel)	G.W/CTN(KG)	CTN Size(mm)
1.46	10	14.6	485x260x380
