

### Type IC 4" Slim Round LED Panel Lights



Specifications	
Cut-Out Size	4 inch
Wattage	9 watts
Input Volatge	AC120V,60Hz
Beam Angle	120°
Light Sourece	SMD LED
Color Temperature	3000K-4000K-5000K
CRI	80Ra
Lumens Output	700±5%
Lumen Efficiency	80lm/w
Halogen Equiv.	65 watts
Dimmable	100%-10% (110V only)
Dimming Tech.	Triac dimming
Cerification	ETL cETL
Power Factor	>0.9
Projected Life	50,000hrs at 70% Light Output
Warranty	3years
Approved Location	Damp Locations
IC Rated	Yes
Air Tight	Yes

#### Housing

Durable die-casting aluminum lamp housing with excellent heat dissipation, provide maximum airflow for the SMD LED light source.

#### LED Characteristics

This fixture contains SMD2835 LED module that offer high light color uniformity, 9 watts up to 700 lumens;

#### Dimming

This panel light is dimmable from 100% down to 10% smoothly, works with the majority of standard triac dimmers like Lutron/leviton, etc. Please contact us for compatible dimmer list.

#### Mounting

Includes two spring loaded clips to attached to any ceiling material. Easy recessed installation without needing a stand pot light can.

#### LED Driver

Iron metal driver box with junction box and a reliable isolated constant current dimmable class II electronic LED driver inside.

#### Special Features

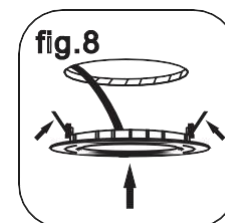
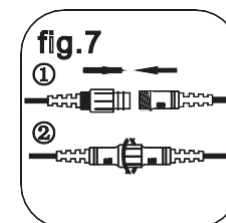
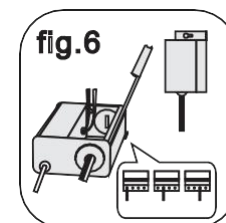
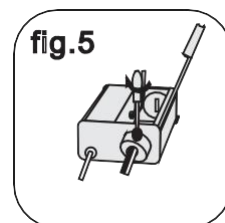
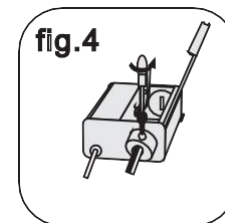
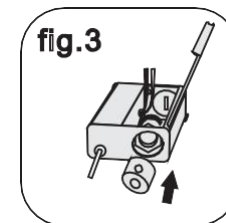
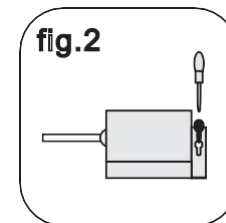
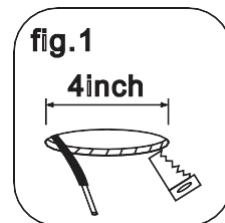
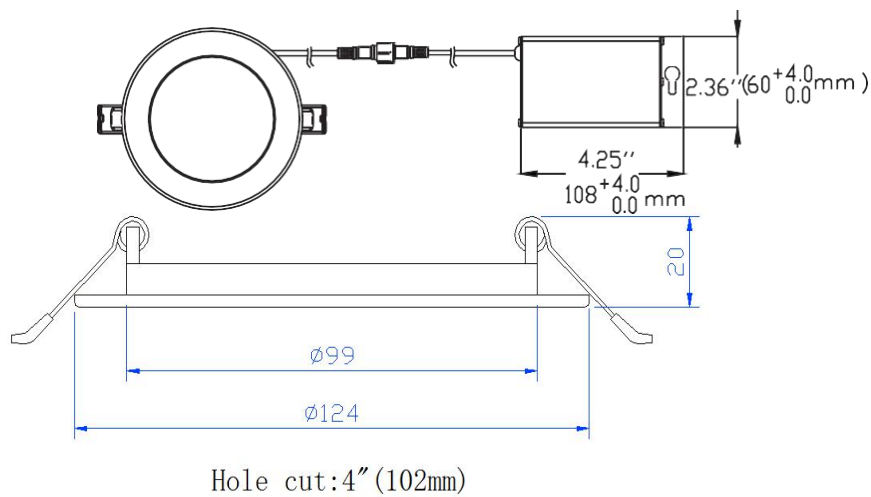
CCT Adjustable function - 3 light color in one light.

Version A: Select a color temperature from warm white, nature white, cool white by using the DIP switch on the driver box.

Version B: Adjust the color temperature by switch on and switch off the fixture quickly within 1 seconds to change the light color circularly among warm white, nature white and cool white.



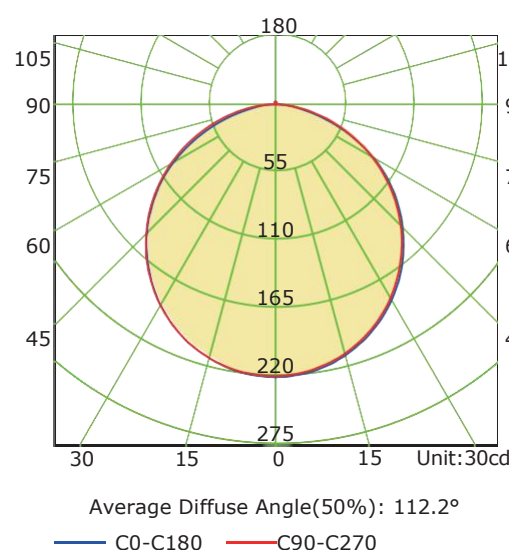
IC Rated



### Ordering Guide

ML-SMP-9W-120V

#### Luminous Intensity Distribution Curve



#### Illuminance at a Distance

Dist(m)	Enadir(lx)	Dh/Dv_B(m)	S_B(sq.m)	Eav_B(lx)
1.0	220.35	2.98/2.98	7.0	36.26
		10.61/13.18	122.3	0.90
2.0	55.09	5.95/5.96	27.9	9.06
		21.23/26.36	489.4	0.23
3.0	24.48	8.93/8.94	62.7	4.03
		31.84/39.54	1101.1	0.10
4.0	13.77	11.90/11.92	111.5	2.27
		42.46/52.72	1957.5	0.06
5.0	8.81	14.88/14.91	174.2	1.45
		53.07/65.90	3058.6	0.04
6.0	6.12	17.85/17.89	250.8	1.01
		63.69/79.07	4404.4	0.03
7.0	4.50	20.83/20.87	341.4	0.74
		74.30/92.25	5994.9	0.02
8.0	3.44	23.80/23.85	445.9	0.57
		84.92/105.43	7830.1	0.01
9.0	2.72	26.78/26.83	564.3	0.45
		95.53/118.61	9910.0	0.01
10.0	2.20	29.75/29.81	696.7	0.36
		106.15/131.79	12234.5	0.01

Dv Beam Angle(B): H112.2 V112.3 Field Angle(F): H158.7 V162.7